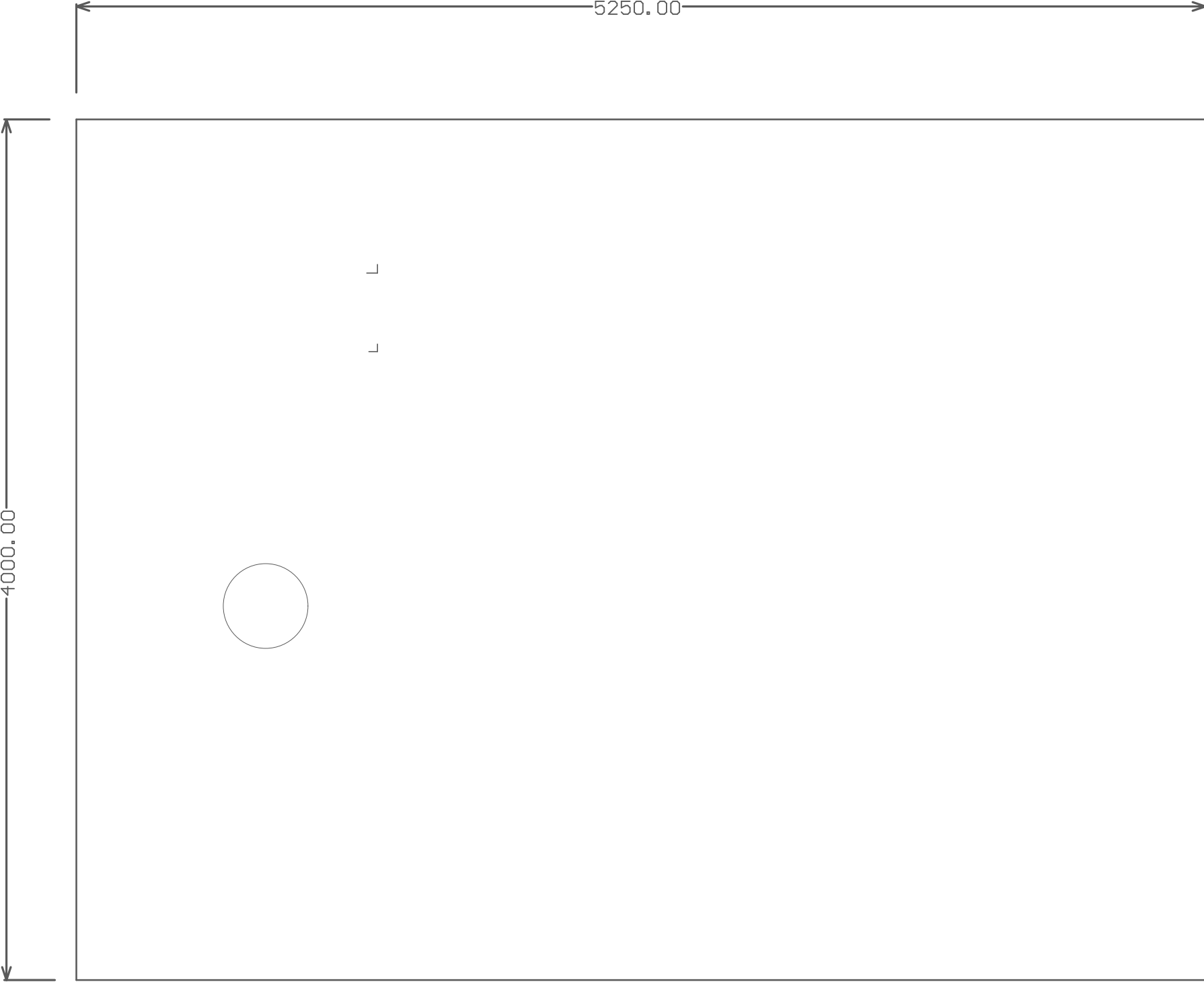
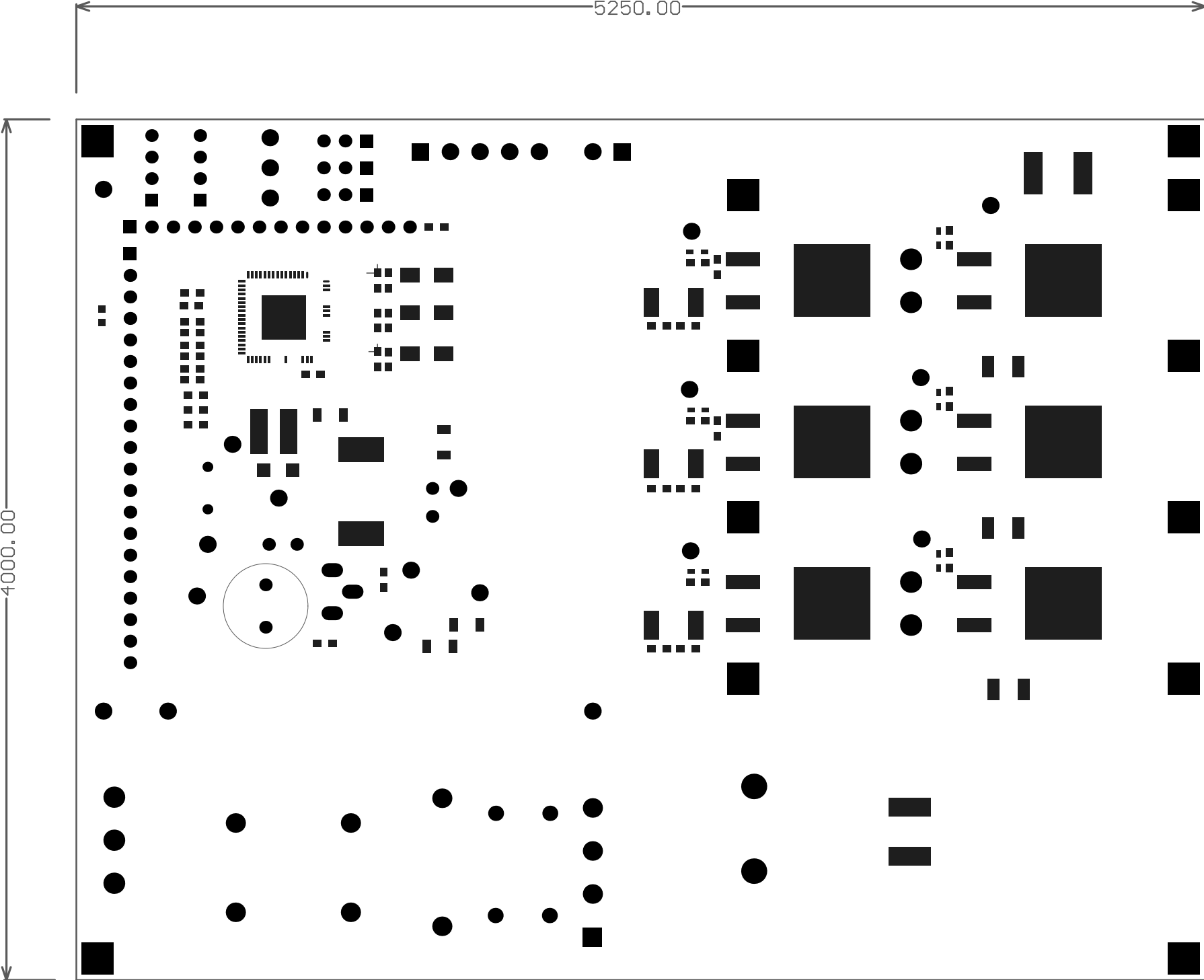
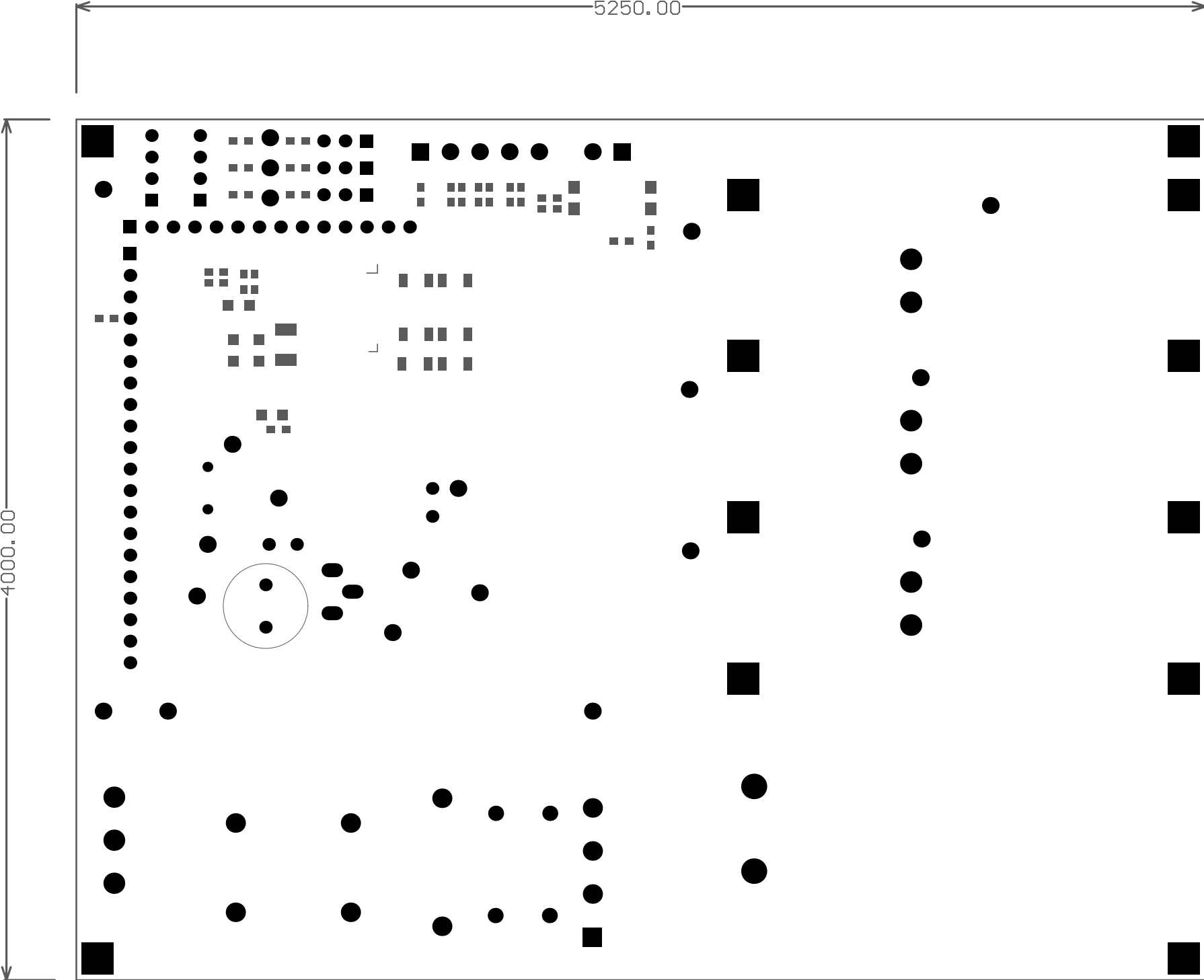


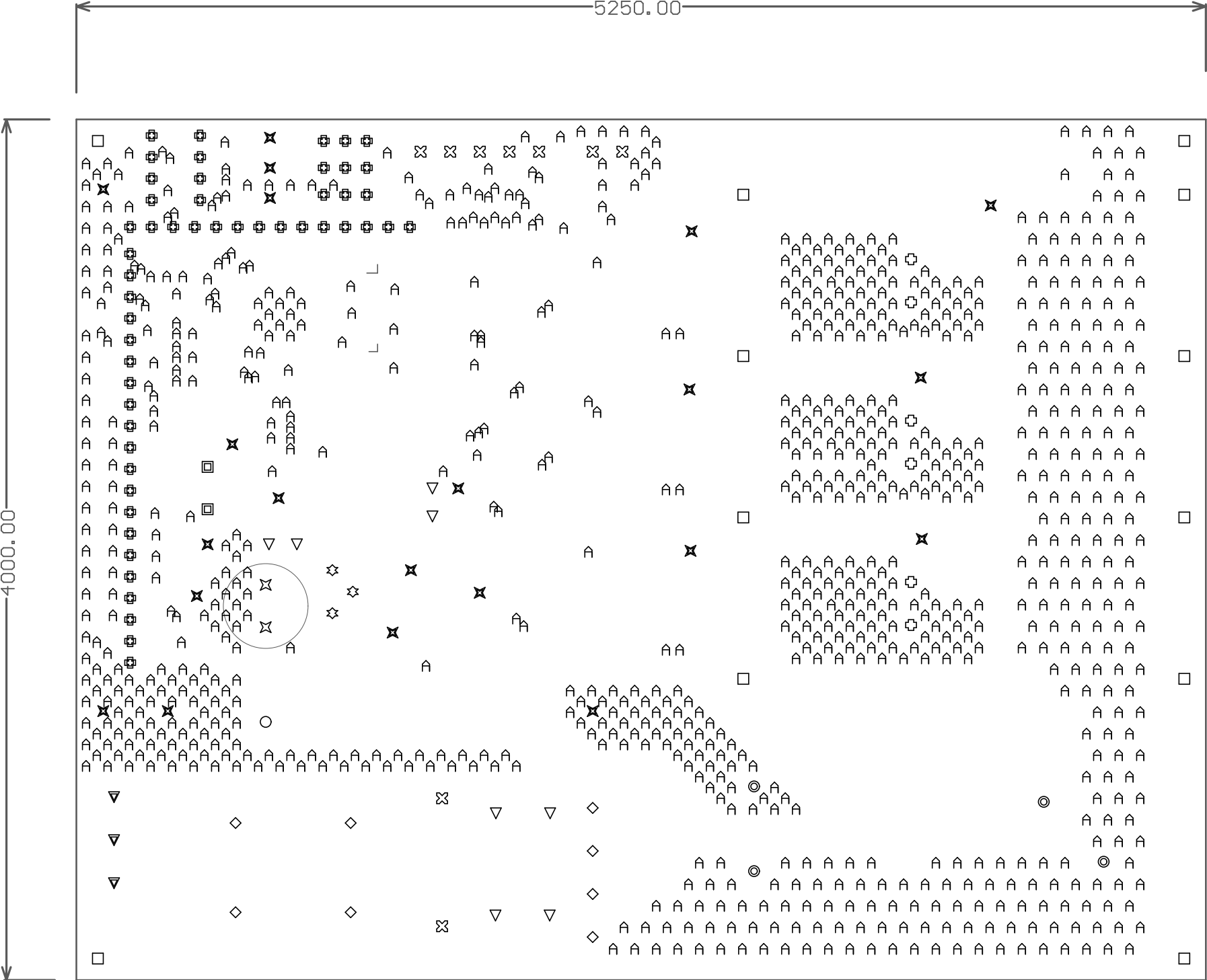
5250.00

PCB layout of the PAC5256EVK1 evaluation kit. The board features a central microcontroller (IC5) surrounded by various components including capacitors (C1-C29), resistors (R1-R44), inductors (L1-L3), and transistors (Q1-Q4). It includes a USB interface (J1, J2), a Hall sensor (JMPx), and a DAC (JMPx). The board is populated with components from Active-Semi and other manufacturers. The layout shows the placement of components on a single-sided PCB with a 0.1 inch pitch connector.









Symbol	Hit Count	Finished Hole Size	Plated	Hole Type	Physical Length	Rout Path Length
A	887	12.00mil (0.305mm)	PTH	Round	-	-
○	1	25.00mil (0.635mm)	PTH	Round	-	-
◻	2	27.56mil (0.700mm)	PTH	Round	-	-
✕	2	35.43mil (0.900mm)	PTH	Round	-	-
⊕	51	36.00mil (0.914mm)	PTH	Round	-	-
▽	8	39.37mil (1.000mm)	PTH	Round	-	-
☆	3	40.00mil (1.016mm)	PTH	Round	-	-
⊗	9	47.24mil (1.200mm)	PTH	Round	-	-
⊕	6	55.12mil (1.400mm)	PTH	Round	-	-
◇	8	59.06mil (1.500mm)	PTH	Round	-	-
✕	21	63.00mil (1.600mm)	PTH	Round	-	-
▽	3	70.87mil (1.800mm)	PTH	Round	-	-
◎	4	86.61mil (2.200mm)	PTH	Round	-	-
◻	12	125.00mil (3.175mm)	PTH	Round	-	-
	1017 Total					

