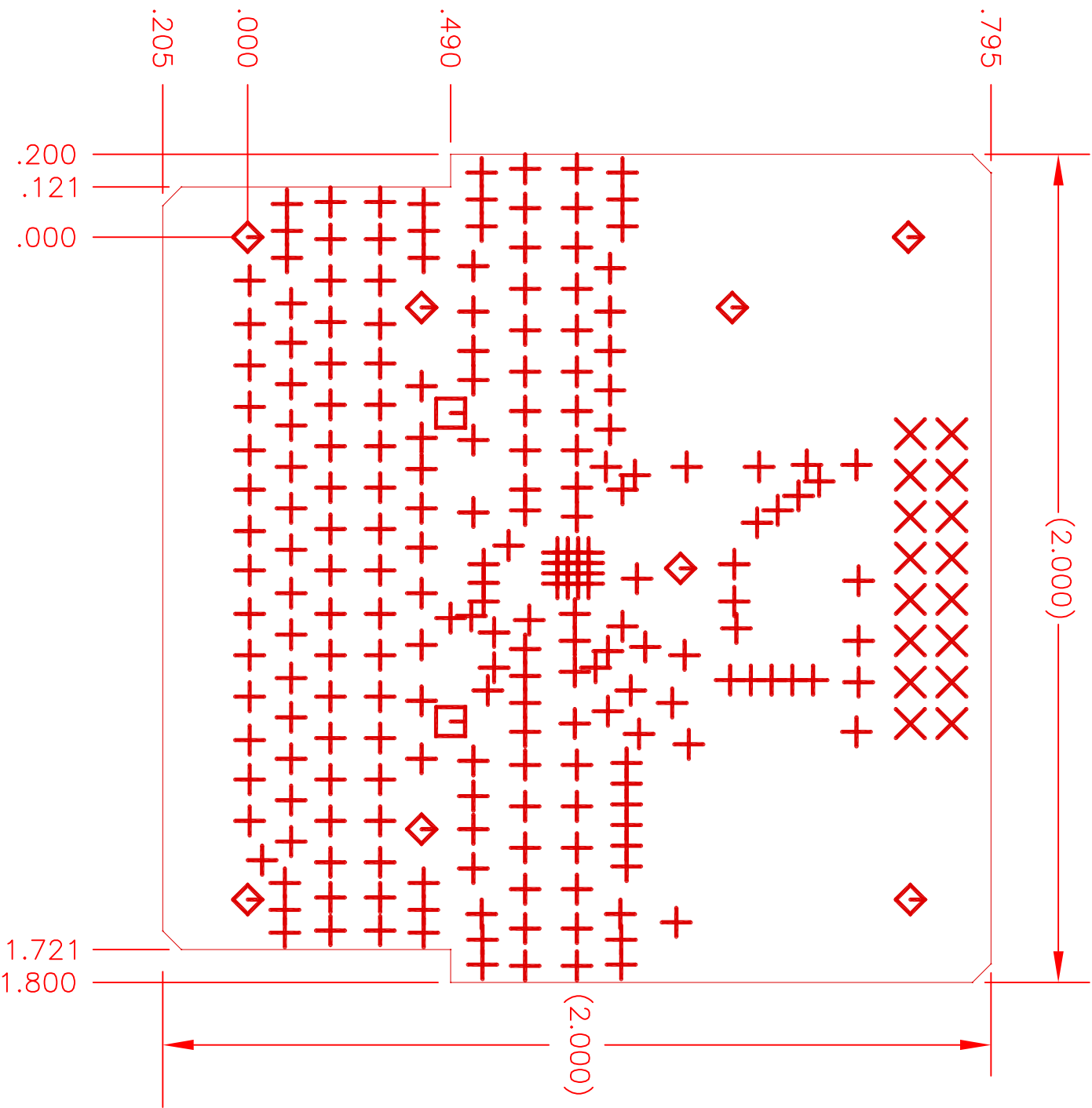
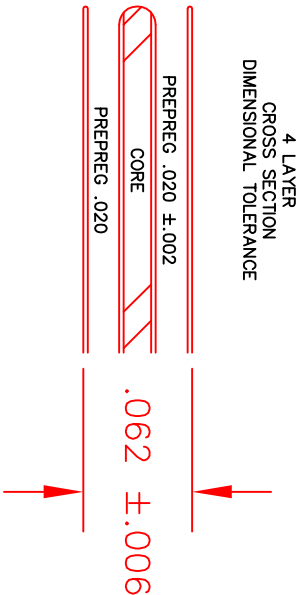
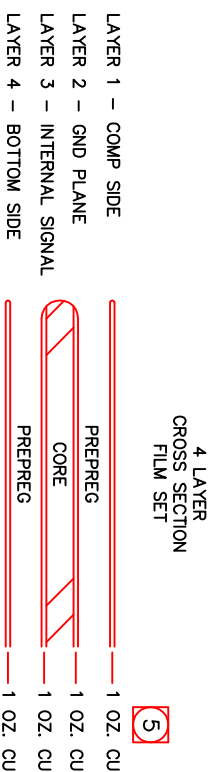


COMPONENT SIDE

NOTES UNLESS OTHERWISE SPECIFIED:

1. FABRICATE IAW IPC-6012, CLASS 2, CURRENT REVISION.
2. BOARD SHALL MEET THE INSPECTION CRITERIA OF IPC-A-600 CLASS 2, CURRENT REVISION.
3. USE ARTWORK 1075714AW REV --.
- 4 MATERIAL: 4003. SEE LAYER STACK-UP BELOW.
- 5 FINISHED WEIGHT OF ALL COPPER LAYERS SHALL BE 1 OZ. PER SQUARE FOOT NOMINAL.
6. DESMEAR HOLES AND VIAS.
- 7 FINISH: ENIG
8. SILKSCREEN TOP SIDE WITH NONCONDUCTIVE EPOXY INK. COLOR SHALL BE A CONTRASTING INK WITH RESPECT TO SOLDERMASK COLOR. DISTORTION OF SILKSCREEN IS ACCEPTABLE OVER TRACES. REMOVE EPOXY INK FROM SOLDER LANDS.
9. APPLY SOLDERMASK OVER BARE COPPER (SMOBC) IAW IPC-SM-840, TOP SIDE, USING LPI, COLOR CLEAR OR GREEN. SOLDERMASK OVER VIAS IS NOT ACCEPTABLE.
10. TANGENCY IS ACCEPTABLE.
11. REMOVAL OF NON-FUNCTIONAL PADS ON INTERNAL LAYERS IS ACCEPTABLE.
- 12 SUPPLIER LOGO AND LOT NUMBER/DATE CODE SHALL ONLY BE SILKSCREENED WITH NON-CONDUCTIVE EPOXY INK IN APPROX. LOCATION SHOWN.
- 13 MARK ARTWORK 1075714AW, CURRENT REV LEVEL APPROX. WHERE SHOWN.
14. ALL ROUTING ARE INDICATED BY HATCHED AREAS.
- 15 SCORING PROCESS TO FOLLOW DETAIL "A" (SEE SHEET 2). CIRCUIT FABRICATOR TO BREAK ONE SUB-PANEL FROM EACH LOT TO ENSURE PROPER SCORING ACHIEVED.
- 16 A MAXIMUM OF TWO (2) X-OUT ARE ALLOWED PER SUB-PANEL.



HOLE SCHEDULE (ALL PLATED THRU DIAMETERS ARE AFTER PLATING)			
SYM	DESCRIPTION	PLATED THRU	QTY
+	Ø.010 +.003/--.010 THRU	YES	222
×	Ø.040 ±.003 THRU	YES	16
□	Ø.055 +.001/--.003 THRU	YES	2
◇	Ø.102 ±.003 THRU	YES	4

QTY PER DASH NO	ITEM NO	PART OR IDENT NO	CAGE CODE	NOMENCLATURE OR DESCRIPTION	SPEC/STD
PARTS LIST OR MATERIAL					
UNLESS OTHERWISE SPECIFIED, DIMENSIONS ARE IN INCHES. TOLERANCES UNLESS OTHERWISE SPECIFIED: 1X DEC ±.02 100X DEC ±.005 V ±.2" 0"				PRINTED CIRCUIT BOARD DSA	
MATERIAL:				THQaint SEMICONDUCTOR SAN JOSE, CALIFORNIA	
DESIGN: K. KEISEN 2-10-09				SIZE CAGE CODE D 14482 1075714PC	
FINAL PROTECTIVE FINISH: ENIG M. MOKALLA 2-10-09				REV -	
CONTR NO.				SHEET 1 OF 2	

A

B

C

D

A

B

C

D

1075714PC